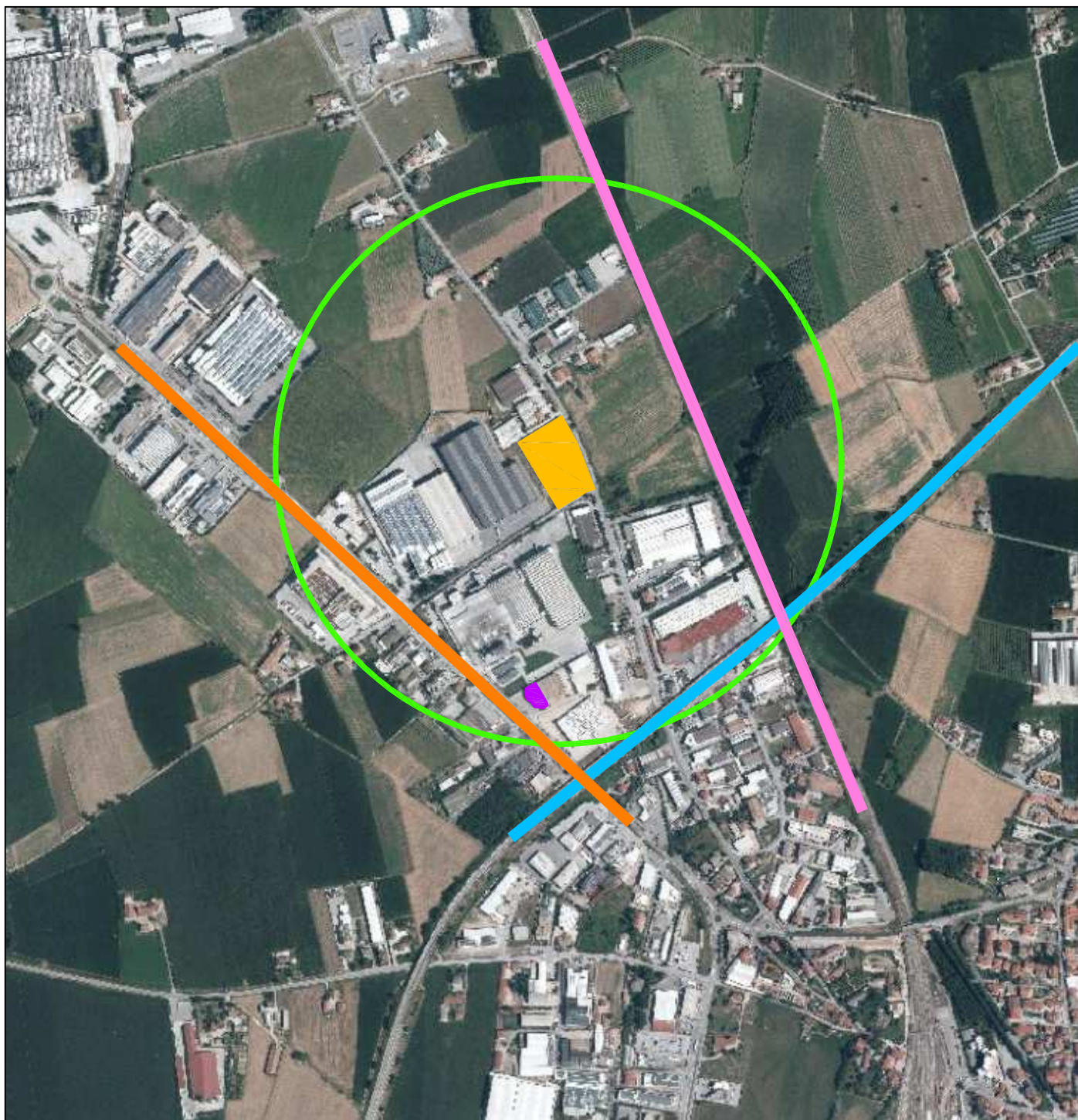








# Carta degli elementi territoriali vulnerabili - sc.1:10.000

(base cartografica ORTOFOTO AGEA 2018)



## Legenda

-  stabilimento Liquigas
-  perimetrazione a 500 metri
-  locale pubblico con possibile affollamento (Birreria Moulin)
-  ferrovia TO - SV - CN
-  strada S.S. 28
-  strada S.S. 231 variante